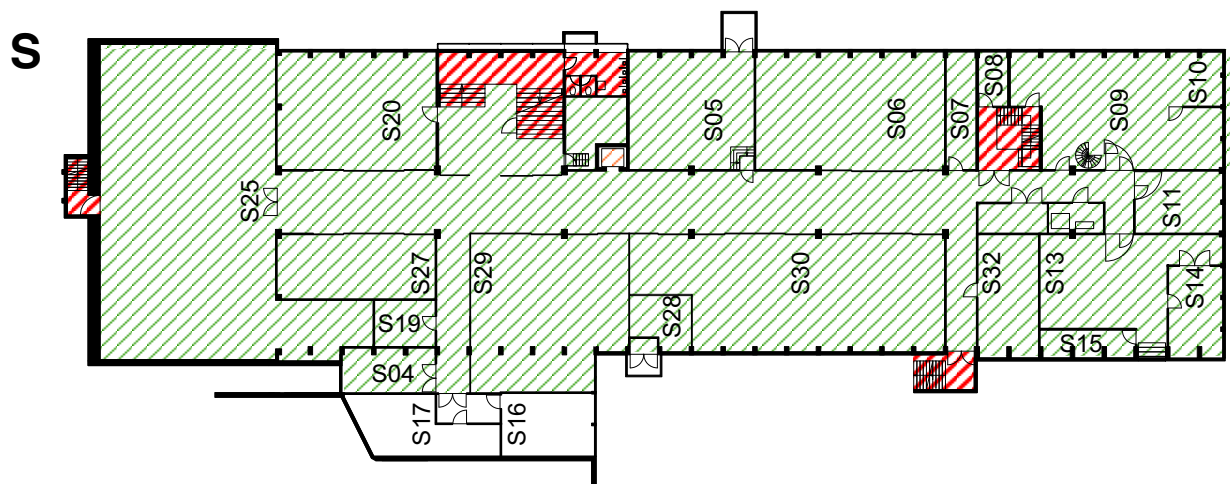
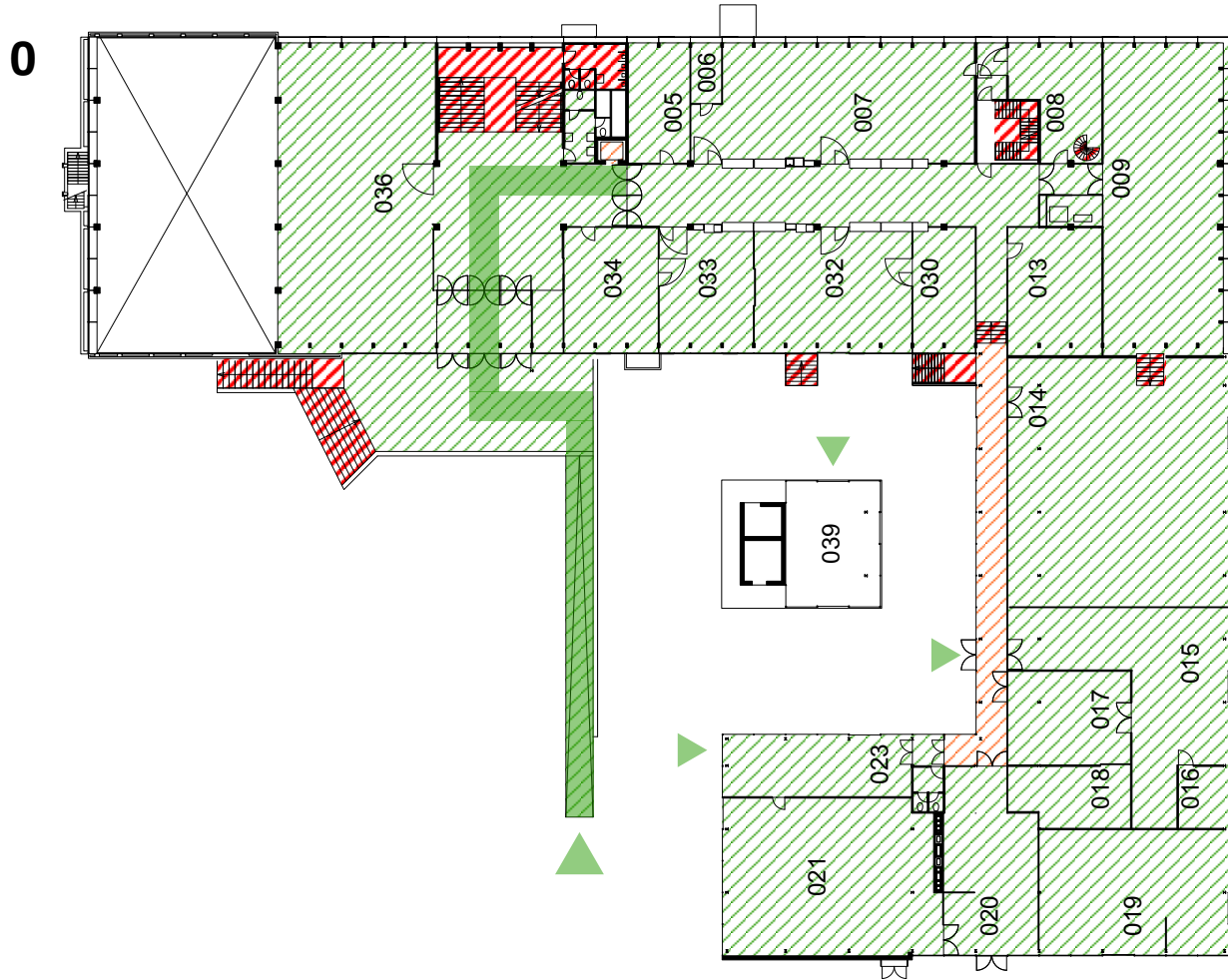
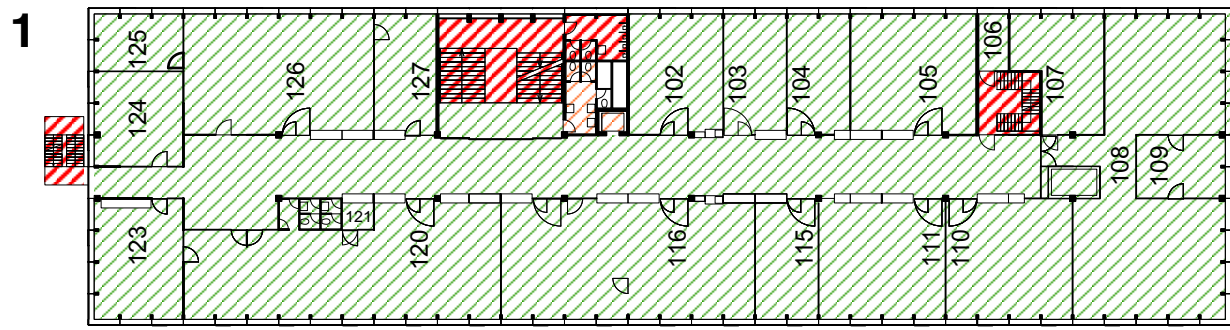
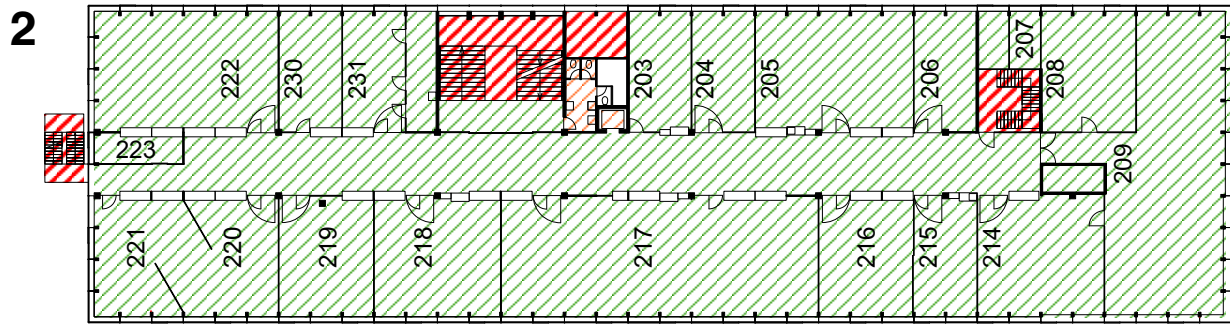
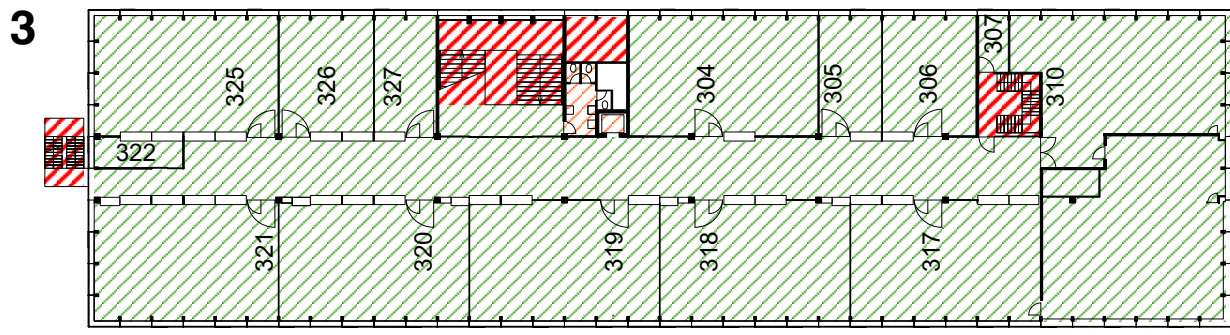





Rietveldgebouw



Toegankelijkheid rolstoelgebruiker

 zone volledig zelfstandig toegankelijk (geen obstakels)

 zone verminderd zelfstandig / met hulp toegankelijk (i.v.m. passeren van deur(en) met dranger)

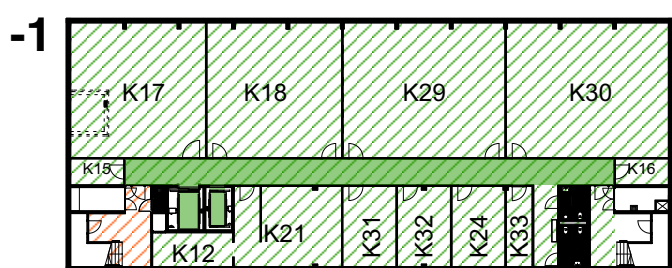
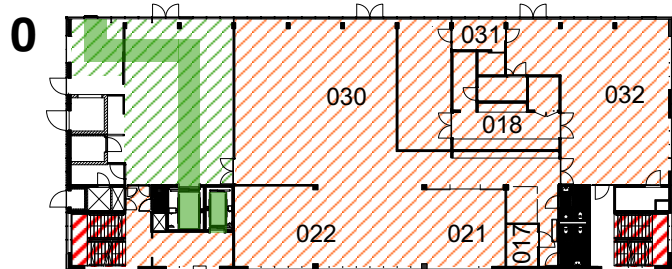
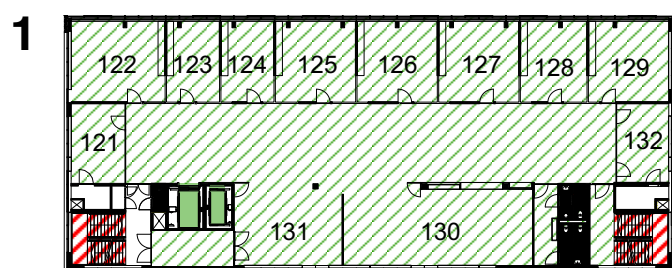
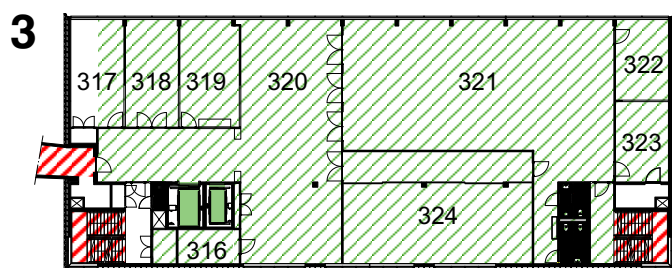
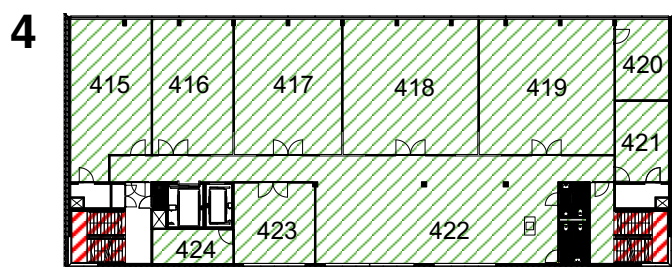
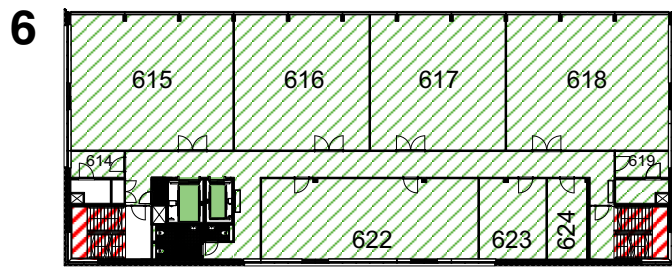
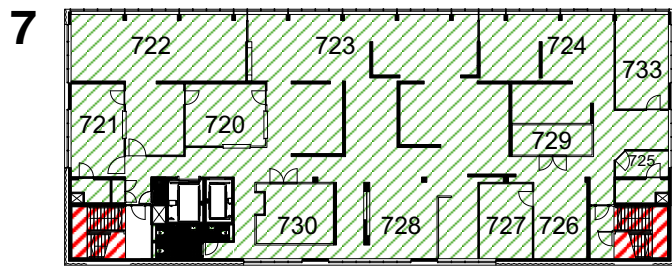
 zone niet toegankelijk (veelal trappenhuisen en eventueel daaraan grenzende ruimten)




De lift in het Rietveld gebouw is beperkt toegankelijk voor rolstoelen. De lift heeft de volgende afmetingen:


- Breedte deur: 90 cm
- Breedte liftkooi: 110 cm
- Diepte liftkooi: 98 cm


Bentham Crowwel gebouw



Toegankelijkheid rolstoelgebruiker

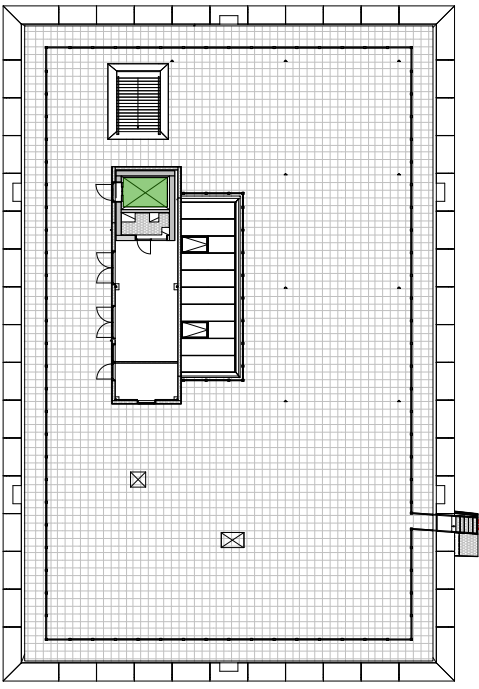
 zone volledig zelfstandig toegankelijk (geen obstakels)

 zone verminderd zelfstandig / met hulp toegankelijk (i.v.m. passeren van deur(en) met dranger)

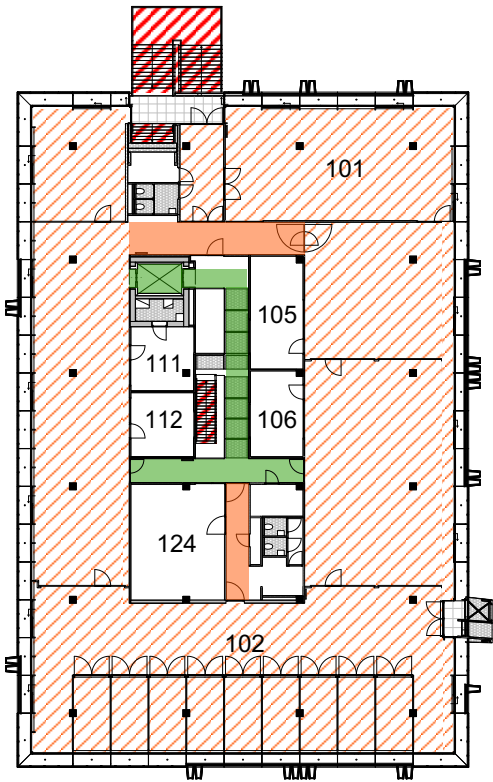
 zone niet toegankelijk (veelal trappenhuisen en eventueel daaraan grenzende ruimten)

FedLevgebouw

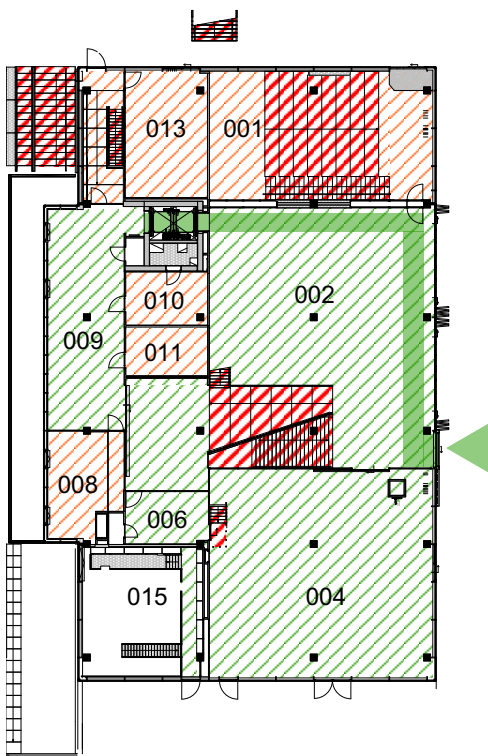
2



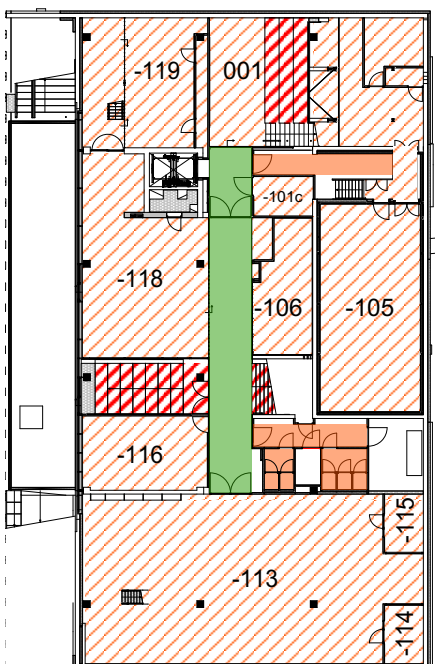
1




0





-1



Toegankelijkheid rolstoelgebruiker

 zone volledig zelfstandig toegankelijk (geen obstakels)

 zone verminderd zelfstandig / met hulp toegankelijk (i.v.m. passeren van deur(en) met dranger)

 zone niet toegankelijk (veelal trappenhuisen en eventueel daaraan grenzende ruimten)